

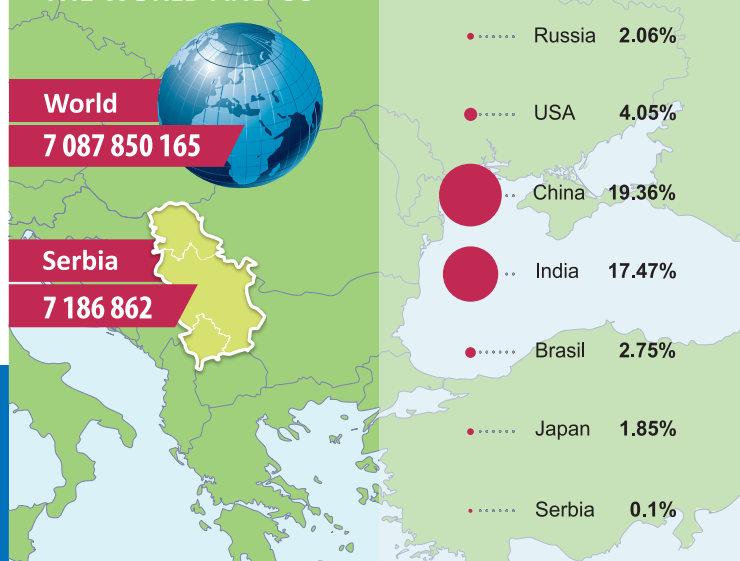
CENSUS BOOKS

1. Ethnicity
2. Age and sex
3. Educational attainment, literacy and computer literacy
4. Religion, mother tongue and ethnicity
5. Marital status
6. Fertility of female population
7. Economic activity
8. Disabilities
9. Migrations
10. Households according to number of members
11. Daily migrants
12. Families
13. Basic characteristics of households
14. Occupations
15. Industry
16. Sources of livelihood
17. Families with children
18. Basic sets of population
19. Economically active population that perform occupation
20. Comparative review of number of population, 1948 – 2011
21. Comparative review of number of households, 1948 – 2011 and dwellings, 1971 – 2011
22. Number and floor space of housing units
23. Dwellings for permanent habitation according to number of rooms and floor space
24. Installations and auxiliary premises in dwellings
25. Dwellings according to ownership and tenure status of households
26. Housing units according to number of occupants and number of households
27. Dwellings by type of building
28. Evaluation of coverage errors
29. Evaluation of content error
30. Dwellings by type of energy raw material used for heating

SPECIAL PUBLICATIONS/STUDIES

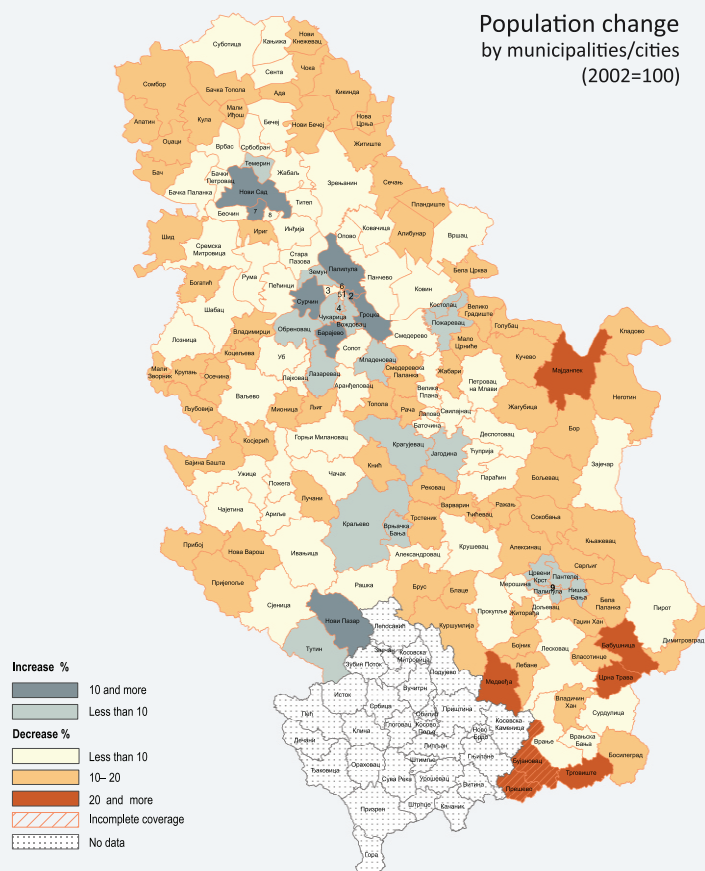
1. Most frequent personal and family names
2. Census and primary school pupils
3. Population projections of the Republic of Serbia, 2011 – 2014
4. Census Atlas
5. Population and households in Serbia
6. Serbian ethnical, confessional and linguistic mosaic
7. Young people in Serbia at the beginning of the 21st century
8. Demographic profile of elderly population of the Republic of Serbia
9. Homeless people
10. Two decades of refugees in Serbia
11. Persons with disability in Serbia
12. External migrants and persons coming back from temporary work-stay abroad
13. Roma people in Serbia according to the 2011 Census of Population, Households and Dwellings
14. Complete life tables for the Republic of Serbia, 2010 – 2012

THE WORLD AND US



2011 Census of Population, Households and Dwellings in the Republic of Serbia

CENSUS IS NOTE FOR THE FUTURE!



About 2011 Census

2011 Census of Population, Households and Dwellings in the Republic of Serbia was carried out in the period from 1 to 15 October 2011, as a traditional census that by methodological approach was fully in compliance with the Recommendations of the Conference of European Statisticians (CES).

By the abundance of its contents, the applied methodology and organisation, the 2011 Census surpasses all the earlier censuses. Many activities and procedures were upgraded and numerous novelties were introduced, such as an intensive media campaign conducted immediately before and during the infield activities, with the aim to advise the wide public on the importance of the Census and the methodology of its implementation. In addition, free call line was established in order to provide replies from the SORS methodologists on all issues related to the Census. The selection of direct participants implementing the Census was centralized, according to the criteria defined in advance. Besides, during the infield operations enumerators used orthographic and photo maps of the statistical and enumeration areas. For data entry applied was the optical character recognition system. For the first time compiled were data on primary homeless people, persons with disability, persons living in consensual unions, computer literacy and PC availability. Further on, the sets of question concerning migrations, economic activity, fertility and type of building were made more extensive.

After the final processing, special care was dedicated to users, i.e. ensuring various channels of data dissemination. Apart from 30 census books, published were four special publications (Most frequent personal and family names, Census and primary school pupils, Projections of population of the Republic of Serbia, 2011–2014 and Census Atlas). We envisaged to release until the end of this year another ten special publications/studies that the SORS prepares in cooperation with a number of our eminent experts.

The published results are available at the SORS and 2011 Census sites (www.stat.gov.rs and www.popis2011.stat.rs) in PDF and Excel format, as dissemination base, dashboard, and through android application as well.

2011 Census was not conducted on the territory of the AP Kosovo and Metohija, while for the municipalities of Preševo and Bujanovac a reduced coverage was expressive due to the boycott by the majority of members of the Albanian ethnic community.



www.stat.gov.rs
www.popis2011.stat.rs

POPULATION				
	Total	Male	Female	
Number of population	7 186 862	100	100	100
Urban settlements	4 271 872	59.44	58.3	60.5
Other settlements	2 914 990	40.56	41.7	39.5
Age		100	100	100
0-14	1 025 278	14.27	15.1	13.5
15-64	4 911 268	68.34	69.9	66.9
65 and over	1 250 316	17.40	15.1	19.6
<i>Average age (years)</i>	<i>(years)</i>	42.2	40.9	43.5
Education (15 +)	6 161 584	100	100	100
Without formal education	842 383	13.67	9.1	17.9
Primary education	1 279 116	20.76	20.0	21.5
Secondary education	3 015 092	48.93	54.3	43.9
Tertiary education	1 000 569	16.24	16.2	16.3
Computer literacy (15 +)	6 161 584	100	100	100
Fully or partially computer literate persons	3 018 730	48.99	51.3	46.8
Computer illiterate persons	3 142 854	51.01	48.7	53.2
Marital status (15 +)	6 161 584	100	100	100
Never married	1 719 959	27.91	33.3	22.9
Married	3 396 240	55.12	57.0	53.4
Widowed	716 843	11.63	5.2	17.6
Divorced	303 970	4.93	4.1	5.7
Economic activity		100	100	100
Performing occupation	2 304 628	32.07	38.1	26.3
Unemployed	666 592	9.28	10.5	8.1
Economically inactive	4 215 642	58.66	51.4	65.5
Migrations		100	100	100
Autochthonous	3 949 797	54.96	63.3	47.1
Immigrated from another settlement within Serbia	2 465 097	34.30	26.9	41.4
Immigrated from abroad	770 528	10.72	9.8	11.6
Disability		100	100	100
Persons with disability	571 780	7.96	6.8	9.0

HOUSEHOLDS				
	Total	Family households	Non-family households	
Number of households	2 487 886	100	100	100
With 1 member	555 467	22.33	—	92.5
With 2 and 3 members	1 114 733	44.81	56.7	7.4
With 4 or more members	817 686	32.87	43.3	0.1
Average number of members	2.9	—	3.5	1.1

FAMILIES				
	Total	Number of members	Aver. numb. of children	
Number of families	2 125 772	100	6 221 072	1.58*
Married couple without children	600 724	28.26	1 201 448	—
Consensual couple without children	48 943	2.30	97 886	—
Married couple with children	1 040 177	48.93	3 815 044	1.67
Consensual couple with children	67 971	3.20	255 913	1.77
Mother with children	291 522	13.71	672 723	1.31
Father with children	76 435	3.60	178 058	1.33

* in families with children

DWELLINGS				
	Total	Urban settlements	Other settlements	
Number of dwellings	3 231 931	100	100	100
Occupied dwellings	2 423 208	74.98	81.0	67.0
Unoccupied dwellings	589 715	18.25	16.3	20.8
Dwellings used occasionally	201 519	6.24	1.9	11.9
Dwellings for performing activity	17 489	0.54	0.7	0.3
Dwellings by installations				
Electricity	3 176 690	98.29	99.8	96.3
Water supply system	2 990 163	92.52	98.8	84.2
Central heating	1 300 522	40.24	55.4	20.2
Piped gas	280 316	8.67	10.9	5.7
Without installations	28 189	0.87	0.2	1.8
Dwellings by type of building		100	100	100
With 1 or 2 dwellings	2 199 529	68.06	46.5	96.5
With 3 and more dwellings	1 023 596	31.67	53.2	3.3
Other buildings	8 806	0.27	0.3	0.3
Occupied dwellings				
Average floor space of dwellings	74.2 m²	—	70.3 m ²	80.3 m ²
Average number of persons in dwelling	2.9	—	2.8	3.1